

# **The Project Life Cycle**

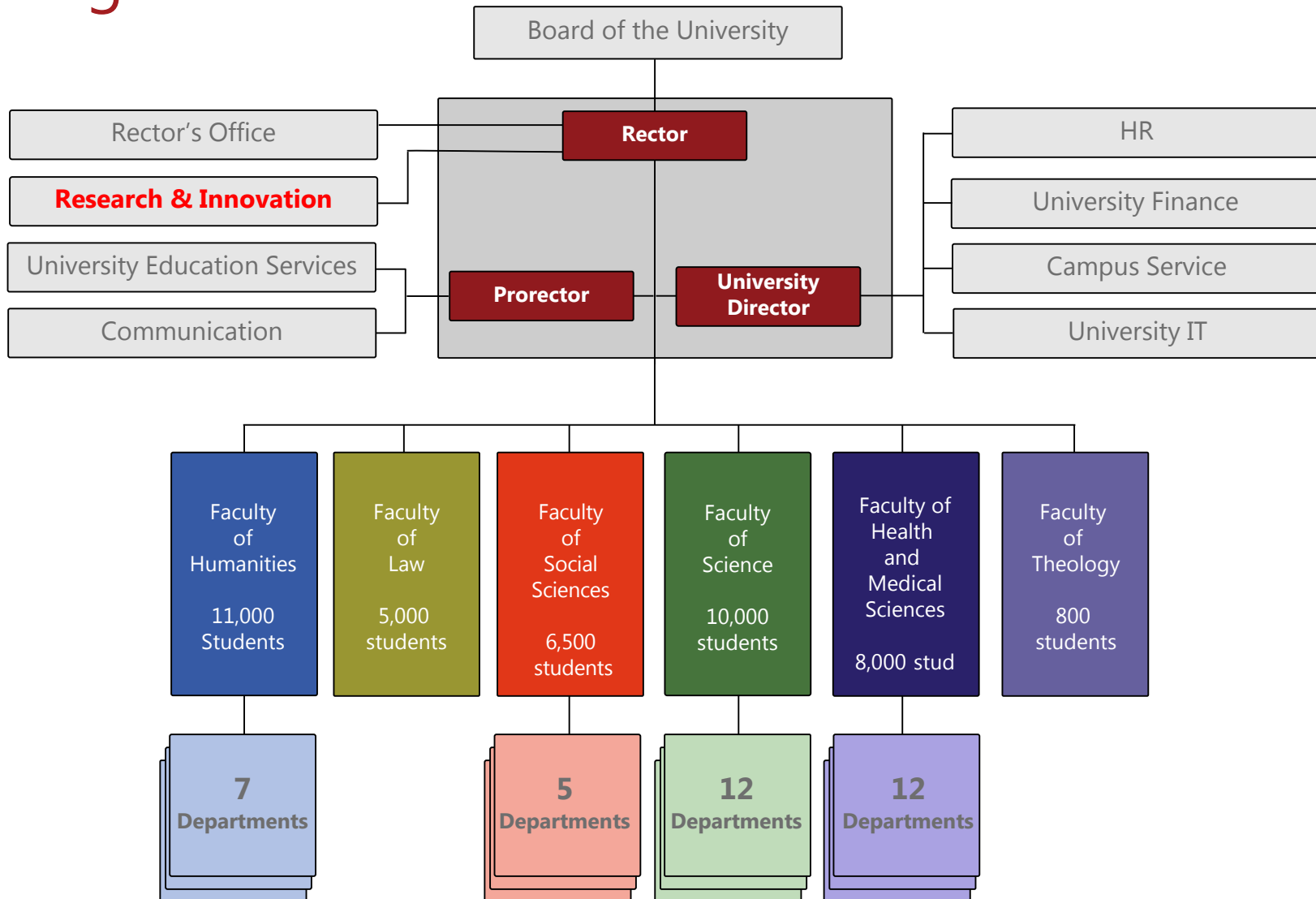
## **How to ensure good cooperation with your researcher**

**Prague 19 of September 2019**

**Poul Petersen**  
**Senior Executive Officer**  
**University of Copenhagen**  
**Research & Innovation**  
**Nørregade 10**  
**1165 Copenhagen K**  
**+45 28 75 28 10**  
**[pope@adm.ku.dk](mailto:pope@adm.ku.dk)**



# Organisation





## Organizational Structure



### Faculties

- Catholic Theological Faculty
- Protestant Theological Faculty
- Hussite Theological Faculty
- Faculty of Law
- First Faculty of Medicine
- Second Faculty of Medicine
- Third Faculty of Medicine
- Faculty of Medicine in Plzeň
- Faculty of Medicine in Hradec Králové
- Faculty of Pharmacy in Hradec Králové
- Faculty of Arts
- Faculty of Science
- Faculty of Mathematics and Physics
- Faculty of Education
- Faculty of Social Sciences
- Faculty of Physical Education and Sport
- Faculty of Humanities



### Rectorate



### University Institutes

- Institute of the History of Charles University and Archive of Charles University
- Center for Theoretical Study
- Center for Economic Research and Graduate Education
- Environment Center



### Other Units

- Computer Science Centre
- Centre for Transfer of Knowledge and Technology
- Institute for Language and Preparatory Studies
- Central Library of Charles University
- Agency of the Council of Higher Education Institutions



### Services Facilities

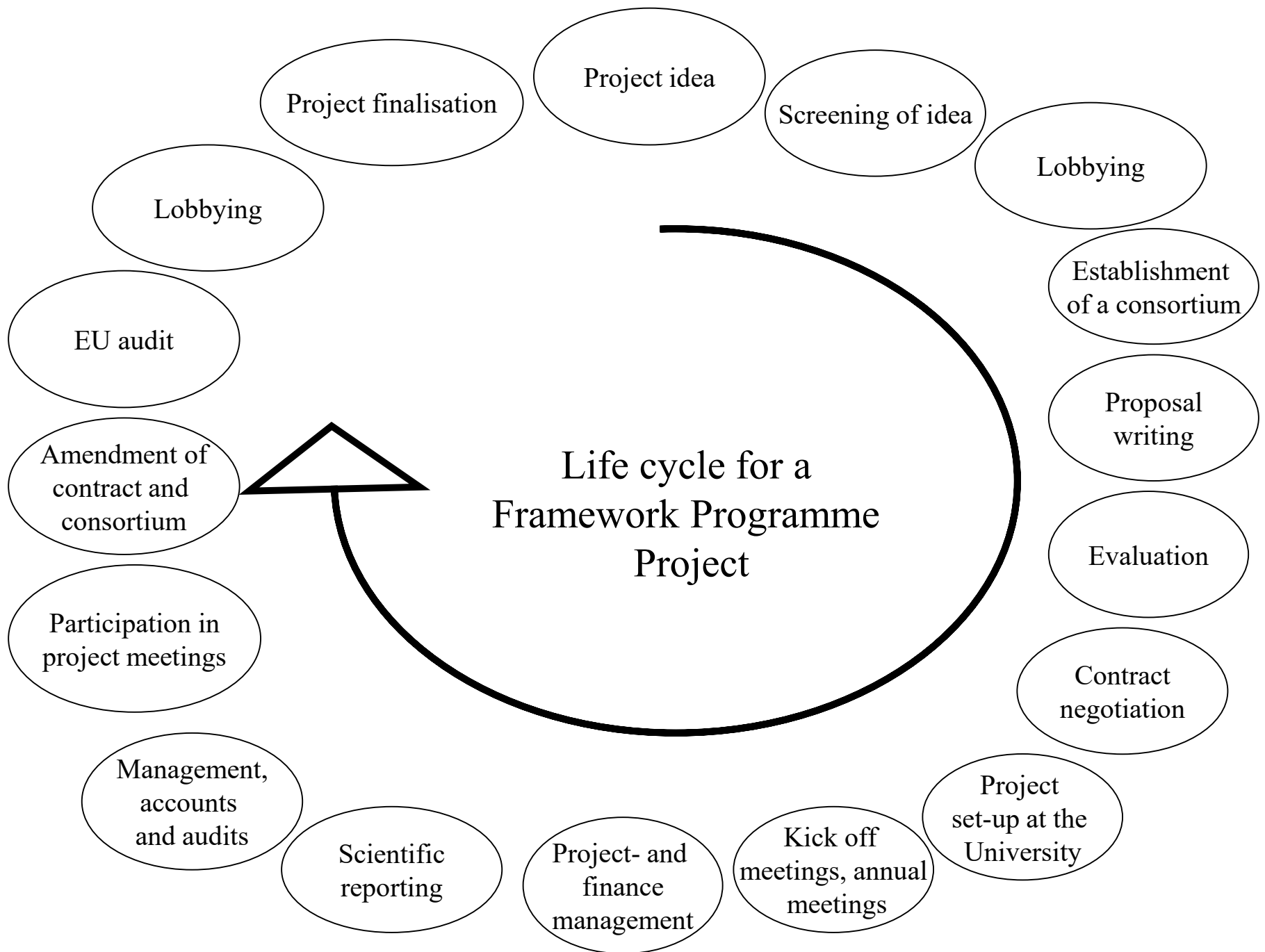
- Dormitories and Refectories



**No organisational structure is perfect**

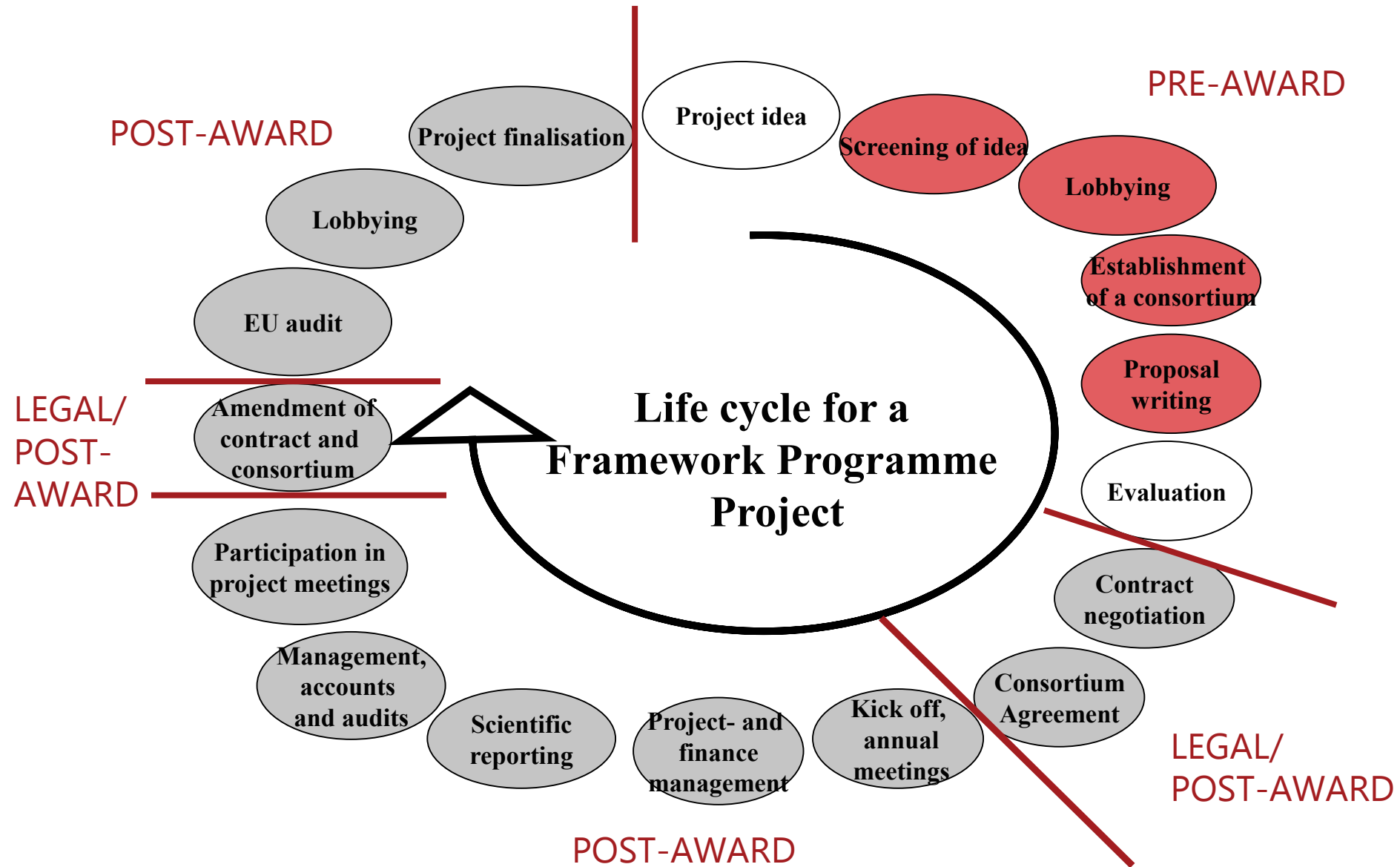
**Try to have a clear division of roles and responsibilities – this will save a lot of time**

# Life cycle for a Framework Programme Project

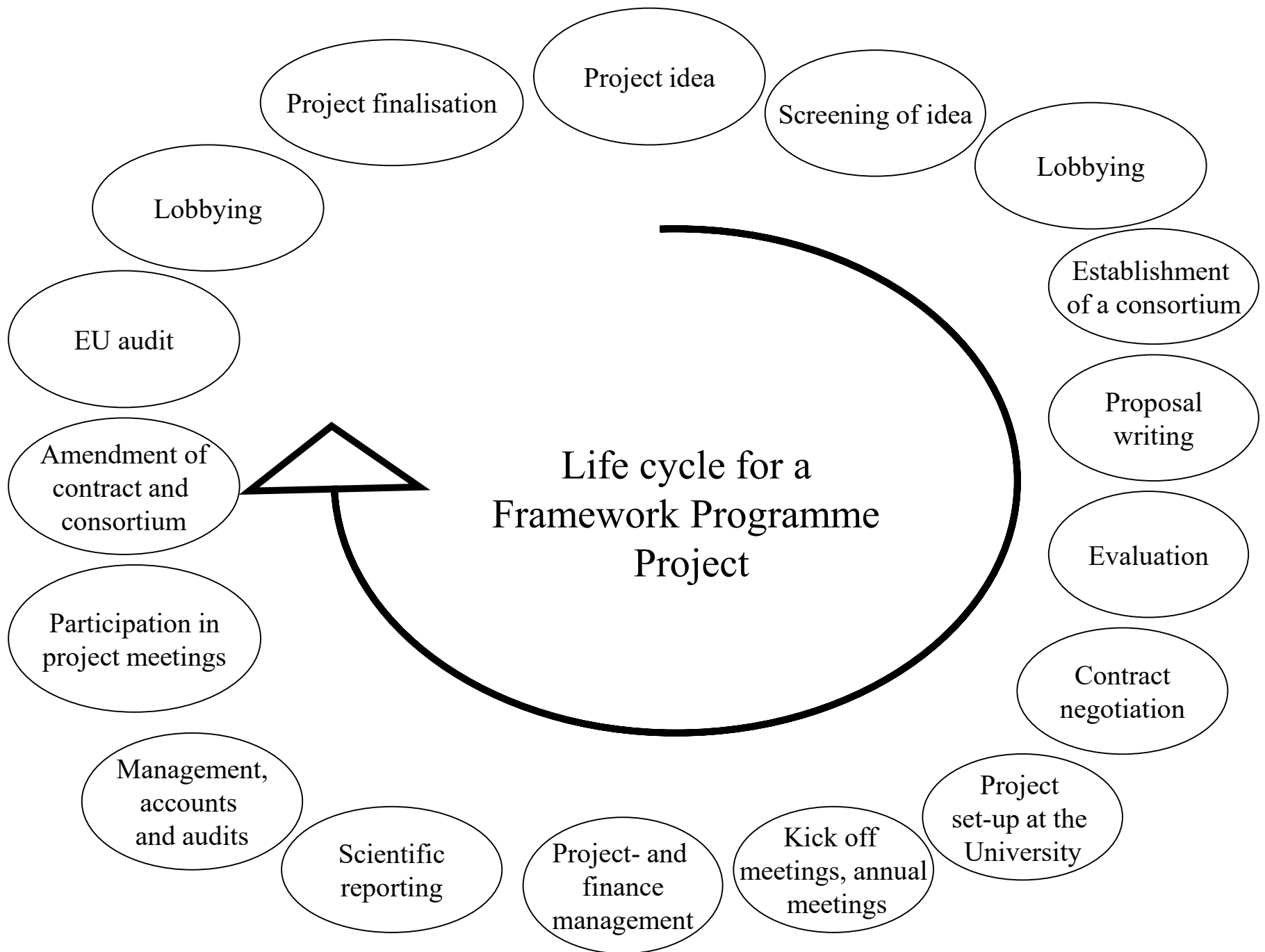


- **Who handles the different steps in the lifecycle at your department?**
- **If you understand the lifecycle, you will save your researcher and yourself a lot of time**

# Lifecycle for a Framework Programme Project



# Life cycle for a Framework Programme Project







**Many researcher are primadonnas - don't be afraid**

**Primadonnas are often just very dedicated people who want to do the most sublime research**

**Stand in their way – and they will hate you**

**Ease their way – and they will love you**

**Try to make your researchers understand that you are actually on their side**



**Understand your own role and responsibilities within your organisation (it took me years)**

**Nobody knows everything – so try to get a good network – both within your own institution and beyond**

**If possible – join relevant national or international networks within your profession (EARMA, DARMA, KOWI etc.)**



**Try to understand your researcher and what motivates him/her**

**Try to understand your researcher's project lifecycle and find out who does what and when**

**Be pro-active**



**Researchers are only humans – and humans can make mistakes**

**Try to prevent your researcher from making mistakes.**

**Hopefully, he/she will be grateful**

**It is all about attitude**



**Best of luck with your researcher**



# Thank you for attention

**Staff training week projektu Zkvalitnění strategického řízení na  
Univerzitě Karlově v oblasti lidských zdrojů ve VaV  
12.9.2019**



EVROPSKÁ UNIE  
Evropské strukturální a investiční fondy  
Operační program Výzkum, vývoj a vzdělávání

  
MINISTERSTVO ŠKOLSTVÍ,  
MLÁDEŽE A TĚLOVÝCHOVY