




**FOR SCIENTISTS  
IN THEIR EARLY CAREERS**



Czech Science Foundation  
Evropská 2589/33b  
160 00 Praha 6

**[www.GACR.cz](http://www.GACR.cz)**

1<sup>st</sup> edition  
Prague, February 2022  
Publication not for sale

# FOREWORD

## Dear scientists in your early careers!



You are the ones that the future of Czech science depends on. The Czech Science Foundation is committed to fostering world-class science in this country, and there is a simple way to get there: supporting the people who create science and their ideas.

We offer you a number of opportunities to become co-creators of Czech and world science. In addition to tenders and calls for all scientists: Standard Projects, International Projects, and EXPRO Excellence Projects, we have an offer just for you.

It is not easy to succeed in our tenders. As anywhere else in the world, only the best projects are selected and funded through grants. I believe that yours can succeed among them. However, in addition to a good idea, you also need to choose the right tender that fits your scientific or career plans. This brochure should help you to better navigate our offers.

For Investigators considering international mobility, we have prepared the tenders for POSTDOC INDIVIDUAL FELLOWSHIP - INCOMING and OUTGOING. These tenders make it possible for you to spend your postdoctoral years at a prestigious institution abroad or, vice versa, come to the Czech Republic from abroad - for example, after completing a postdoctoral fellowship.

Standard Projects are designed for Investigators who have an interesting idea that can be explored within three years of work. Although senior Investigators also apply for these, the panel reviewers take into account the length of the applicants' careers. Even students can apply (and succeed!).

The JUNIOR STAR tender is prepared for the most talented researchers. Each year, a few selected excellent scientists in their early careers will obtain extraordinary conditions for achieving scientific independence and/or starting their own teams. It is possible to receive up to CZK 25 million for work on a five-year project.

Even if you don't decide to submit your own Project Proposal, you have the opportunity to work as members of research teams. Did you know that about 7,000 students and postdocs participate in our projects each year?

On behalf of the Presidium of the Czech Science Foundation, I wish that your scientific dreams and personal goals will come true, and I hope that our Foundation will be part of it!

**Petr Baldrian, Ph.D.**  
President, Czech Science Foundation

# TENDERS FOR EARLY-CAREER SCIENTISTS

Within the framework of the announced tenders, the Czech Science Foundation funds scientific projects of both seasoned scholars and teams, as well as young and early-career scientists. This publication focuses on tenders suitable for early-career scientists.



Gain experience at an institution abroad



Come and carry out your research in the Czech Republic

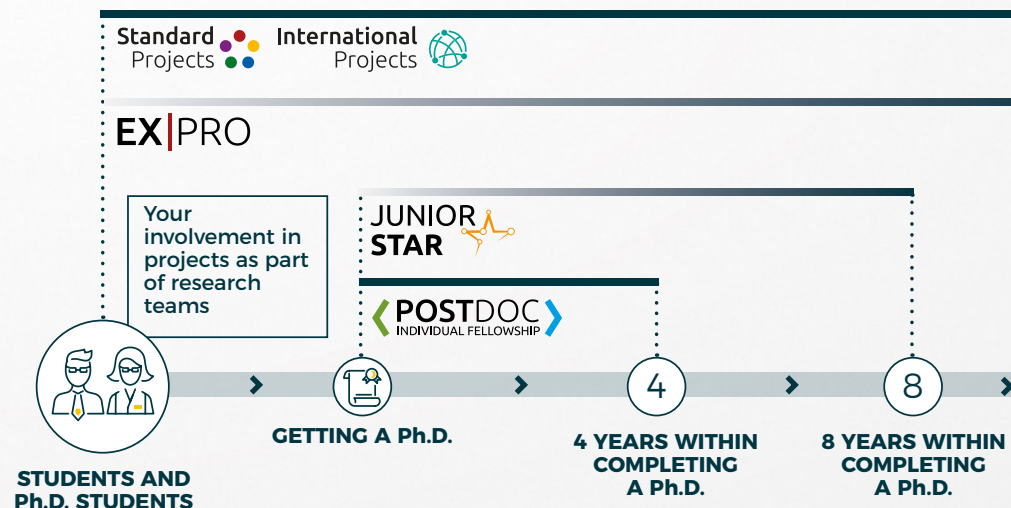


Obtain extraordinary conditions and the opportunity to build your own team



Solve a scientific problem that interests you

# SCHEME OF THE TENDERS RUN BY THE CZECH SCIENCE FOUNDATION



# POSTDOC INDIVIDUAL FELLOWSHIP OUTGOING

*Gain experience at an  
institution abroad*



An opportunity to spend 2 years working at a prestigious institution abroad, and one year in the Czech Republic



An individual project with the possibility of involving master's students and technical staff in the Czech Republic



Projects may also cover the living expenses of a close relative (e.g. a descendant) if accompanying the Investigator abroad



For Investigators within 4 years of completing their Ph.D.

**tip**

Increase your chances of success by selecting a prestigious institution abroad and a research group that will best enable you to meet the scientific aims of your project!

## FAQ

### Who will determine the topic of the project?

It is up to the grant Applicant to determine the topic of the project and how it will be addressed – but it must be a basic research project. The Project Proposal will go through a multi-stage evaluation process.

### I don't have a Ph.D. yet. Can I participate in the tender?

You can submit your Project Proposal before your Ph.D. defence. However, you must defend your dissertation no later than 30 September of the year in which the tender is published.

### How is the 4-year period from the date of completing the Ph.D. calculated?

A maximum of 4 years from the award of the Ph.D. degree may elapse before 30 September of the year in which the tender is published. This time limit may be extended by any time spent in care for a family member or a close relative (e.g. maternity/parental leave) or long-term illness.

### Can I get involved in another project funded by the Czech Science Foundation during the project?

No, the Investigator is expected to devote his/her time fully to the individual POSTDOC INDIVIDUAL FELLOWSHIP project. However, in the last year of the project, he/she may submit a proposal within other grant tenders of the Czech Science Foundation.

### How long is the fellowship abroad?

The duration of the fellowship will be 730 days. The whole project will last 1,095 days.

### What is the amount of the payroll subsidy for the Investigator?

The amount of the payroll subsidy is different at the time of the project at the workplace in the Czech Republic and at the time of the fellowship abroad. During the fellowship abroad the amount of payroll subsidy (including compensation for increased living costs) depends on the country where the fellowship takes place. An indicative list can be found in an annex to the tender documentation. For example, for a fellowship in Germany, the payroll subsidy is up to CZK 25,000 plus €2,734 per month can be used for the costs of increased living expenses. During the phase of the project in the Czech Republic, the subsidy for the payroll of the Investigator can reach a maximum of CZK 60,000 per calendar month on average (pro rata according to the FTE workload).

### Can a close person (e.g. husband, wife, partner or dependent child, etc.) accompany the Investigator during the internship?

Yes, if a close relative travels with the Investigator with the consent of the employer, the Investigator is entitled to a reimbursement of the increased living expenses for that person. The amount is determined country by country.

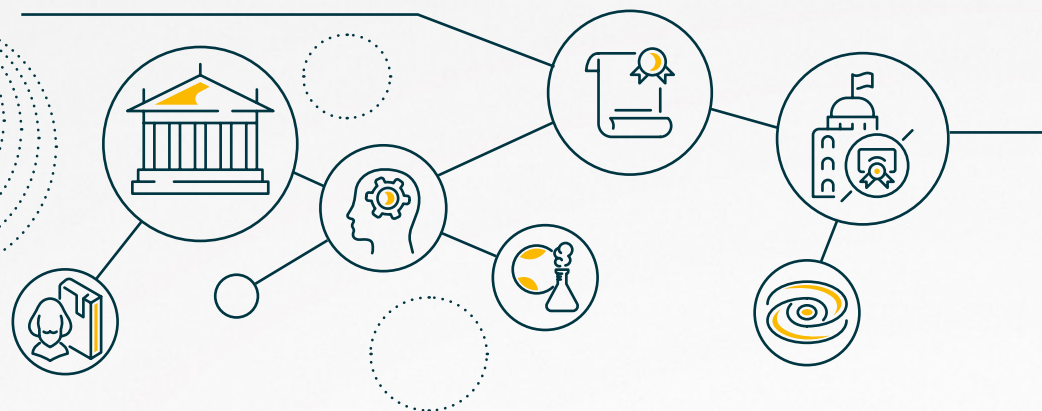
### What is the amount of the payroll subsidy for the collaborators?

For associates, the salary subsidy can reach up to CZK 35,000 per calendar month on average (pro rata according to the FTE workload). If a team member is involved on the basis of an employment-like agreement (i.e. not a regular employment), then his/her remuneration may reach a maximum of CZK 400 per hour.

### What are the expected outcomes of the project?

The project is expected to produce outputs in the form of articles in impact factor journals or other peer-reviewed journals, monographs, chapters in scientific publications, or articles in proceedings.

Come and carry out  
your research in the  
Czech Republic



Suitable for returning to the Czech Republic after a postdoctoral study abroad, or for scientists from other countries who wish to kick-start their career in the Czech Republic



For Investigators within 4 years of completing their Ph.D.



A three-year project at a Czech institution



An individual project with the possibility of involving master's students and technical staff in the Czech Republic



Negotiate the conditions of your stay in advance with the scientific institution in the Czech Republic to which you are heading!

### Who will determine the topic of the project?

It is up to the grant Applicant to determine the topic of the project and how it will be addressed – but it must be a basic research project. The Project Proposal will go through a multi-stage evaluation process.

### Can I apply for a grant even though I have previously worked at a Czech institution?

Yes, this grant is also for you as long as you have worked at a scientific institution abroad (either as a Ph.D. student or as an employee) for 2 out of the last 3 years.

This time limit may be extended by any time spent in care for a family member or a close relative (e.g. maternity/parental leave) or long-term illness.

### I am working abroad but at the same time I work at an institution in the Czech Republic, can I still apply for a grant?

Unfortunately, the Applicant must not be in an employment (or similar) relationship with any scientific institution in the Czech Republic on the date of the tender announcement and during the tender period (until the submission deadline).

### I don't have a Ph.D. yet. Can I submit a proposal in the tender?

You can submit your Project Proposal before your Ph.D. defence. However, you must defend your dissertation no later than 30 September of the year in which the tender is published.

### How is the 4-year period from the date of obtaining the Ph.D. calculated?

A maximum of 4 years from the award of the Ph.D. degree may elapse before 30 September of the year in which the tender is published. This time limit may be extended by any time spent in care for a family member or a close relative (e.g. maternity/parental leave) or long-term illness.

### What is the amount of the payroll subsidy for the Investigator?

Subsidies for the Investigator's payroll may reach a maximum of CZK 60,000 per calendar month on average (prorated by the FTE workload).

### What is the amount of the payroll subsidy for the collaborators?

For collaborators, the salary subsidy can reach up to CZK 35,000 per calendar month on average (prorated by the FTE workload). If a team member is involved on the basis of an employment-like agreement (i.e. not a regular employment), then his/her remuneration may reach a maximum of CZK 400 per hour.

### Can I get involved in another project funded by the Czech Science Foundation during the project?

No, the Investigator is expected to devote his/her time fully to the individual POSTDOC INDIVIDUAL FELLOWSHIP project. However, in the last year of the project, he/she may submit a proposal within other grant tenders of the Czech Science Foundation.

### What are the expected outcomes of the project?

The project is expected to produce outputs in the form of articles in impact factor journals or other peer-reviewed journals, monographs, chapters in professional publications or articles in proceedings.

# JUNIOR STAR



Get extraordinary conditions and the opportunity to build your own team



Highly selective tender targeted at excellent scientists with international experience within 8 years of receiving their Ph.D.



Extra support up to CZK 25 mil. for a 5-year project



An opportunity to build your own team and begin the path to scientific independence



Projects and their results are evaluated exclusively by international discipline committees

**tip**

It is risky to rely on getting this exclusive support. A parallel submission of a standard Project Proposal, which may address a similar topic, gives you higher chances of success!

## FAQ

### Who are these grants suitable for?

The grants are intended for the most excellent young scientists who are looking for a path to scientific independence and/or want to start their own team. Approximately 20 grants are awarded annually.

### Is international experience a requirement for submitting a Project Proposal?

Yes, the international experience of the Applicant is one of the evaluation criteria. Relevant international scientific experience includes:

- completing a Ph.D. abroad;
- a longer-term research engagement at a foreign institution after obtaining a doctoral degree or in the course of doctoral studies;
- multiple short-term research engagements at an institution abroad; or
- cooperation with scientists from other countries, resulting in joint publications.

The level of international experience is one of the evaluation criteria.

### Who evaluates Project Proposals and how?

Project proposals are evaluated exclusively by international experts. In addition to the originality and contribution of the scientific question and the quality of the proposed approach, they evaluate the scientific career and achievements of the Applicant, including his/her international experience. The panel selects projects submitted by Applicants who have the potential to become world leaders in their field.

### How is the 8-year period from the date of obtaining the Ph.D. calculated?

A maximum of 8 years from the award of the Ph.D. degree may elapse before 30 September of the year in which the tender is published. This time limit may be extended by any time spent in care for a family member or a close relative (e.g. maternity/parental leave) or long-term illness.

### If I submit a JUNIOR STAR project, can I still apply for other grants from the Czech Science Foundation?

Yes, you can submit a Standard Project or an International Project. An overlap is not permitted with EXPRO and POSTDOC INDIVIDUAL FELLOWSHIP tenders.

### The project may also include setting up my own research team. Who can be a member?

The project may involve professional collaborators, students and postdocs and others (e.g. technical staff). Equal opportunities trends must be applied when setting up the research team. Since the team needs resources for its work, it is necessary to agree on the terms on which the project will be carried out with the institution at which the Applicant plans to work.

### What can the project funds be used for?

In addition to the costs of scientific experiments and the payroll costs of the Investigator and his/her collaborators, it is possible to purchase the necessary equipment for the start-up team.

### What is the amount of the payroll subsidy?

The amount of the personnel costs of the staff directly involved in the project must be determined in accordance with the employer's internal guidelines or in another demonstrable way, and at the same time must correspond to the workload (full-time equivalent) dedicated to the project.

### What are the expected outcomes of the project?

The project is expected to produce outputs in the form of articles in top journals in its field or in other peer-reviewed journals, monographs, chapters in scientific publications, or papers in proceedings.



The most frequently used tender of the Czech Science Foundation, established in 1993



Typically provides project funding for 3 years



Scientists at any stage of their career can apply for this grant - the length of the Applicant's career is taken into account when selecting projects



It is also possible to apply for a standard project along with a simultaneous submission of a proposal within the JUNIOR STAR or POSTDOC INDIVIDUAL FELLOWSHIP tenders.



The curriculum vitae should clearly show the length of the Applicant's career (and any career breaks, for example due to parenthood). The evaluators take this information into account when assessing the applicant's background and qualifications!

### Who are the Standard Projects suitable for?

Standard Projects are open to all scientists regardless of age. When evaluating Project Proposals, the evaluators also take into account the length of the Applicants' careers. This gives early-career scientists the same opportunity to succeed as experienced scientists. It always depends on the overall quality of the Project Proposal and the originality of the idea. The track record of the scientist should also provide sufficient guarantee that the project will be completed successfully.

### Do I have to have a Ph.D.?

It is not necessary, a completed Ph.D. is not a prerequisite for submitting a proposal. Students can also apply for this grant. Many early-career scientists are successful in this tender each year.

### Who qualifies as a team member?

The team can include postdocs and students as well as senior scholars. Technical staff may also be involved if necessary. Equal opportunity trends should be applied in the design of the research team.

### Can I submit an application for another Czech Science Foundation grant together with the submission for a Standard Project?

Yes, it is possible to submit a Project Proposal to certain other tenders and calls. Detailed rules for the overlap of Project Proposals can be found in the Tender Document in Article 3.1.

### How many projects receive grants each year?

Several hundred Standard Projects get funded each year, usually 15-20% of the Project Proposals submitted. Each year, a number of early-career scientists receive funding for a Standard Project.

### What can the project funds be used for?

In addition to the research costs and the payroll costs of the Investigator and his/her collaborators, it is possible to draw funds for the purchase of equipment necessary for the project.

### What is the amount of the subsidy for payroll costs?

The subsidy requested in the Project Proposal can reach up to the individual's gross salary, but may not exceed CZK 60,000 per calendar month (prorated to the FTE workload). If a team member is involved on the basis of an employment-like agreement (i.e. not a regular employment), then his/her remuneration may reach a maximum of CZK 400 per hour.

## International Projects



They are comparable to Standard Projects, but are always jointly developed with a partner in another country.



You can apply for these projects both in calls published by the Czech Science Foundation and in those published (and evaluated) by partner agencies.

# SCIENTIFIC PART OF THE PROJECT

In the scientific part of the project, the most important information about the project is presented. It is always written in English, and must not exceed 10 A4 pages; in case of JUNIOR STAR (and EXPRO and Lead Agency projects) the upper limit is 15 pages - the same as in European Research Council (ERC) tenders. The scientific part must clearly present the aims of the project and the plan to achieve them.

## WHAT SHOULD THE SCIENTIFIC PART CONTAIN?



**A summary of the current state** of knowledge in the field and a description of your contribution to research on the topic or a related topic to date



Expression of the **substance and current relevance** of the project topic, its aims, project approach, including **conceptual and methodological procedures, a detailed timetable and project phases**



**Identification of the risks** to the achievement of the project results, including the intensity and probability of those risks, and ways to minimise them



**Cooperation with scientific institutions abroad**, if planned within the project



If a Co-organization (collaborating institution) is involved in the project, **please explain the need for its participation** in the project, its contribution, and a detailed description of its added value to the successful completion of the project



**Information on the readiness of the Applicant.** Co-applicants and their institutions, about the technical resources of the institution to be used in the project, about the specific possibilities of cooperation, and, where appropriate, on the promotion of the principles of responsible research and innovation (RRI), including **strategic tools for the development of human potential** and the improvement of working conditions of the Organizations. All projects (except POSTDOC INDIVIDUAL FELLOWSHIP OUTGOING) are portable, and can be transferred by the Investigator to another institution if necessary



**Reference to the Organization's existing gender equality plan** or a similar document demonstrating the Organization's active approach to promoting non-discrimination. If the gender plan or a similar document has not yet been adopted, it must be submitted no later than the date of submission of the first Interim Subject-Matter Report



**Description of the team:** explanation of the participation of all Co-applicants (if the Tender Document permits the involvement of Co-applicants), and other collaborators, definition of their contributions to the dealing with the subject matter, including the expected work capacity of individual team members



**Citations/references** to the literature used



**Brief description of the data** produced by the project, and how such data will be handled



The curriculum vitae is an important part of the Project Proposal. It is advisable to include all the information that will convince the evaluator of the Investigator's ability to successfully complete the project: scientific results, awards, international experience, etc. If the Investigator mentions a career break, for example due to parenthood or serious illness, the evaluators will take this information into account.



More detailed information can be found in the Tender Document, please pay attention to it when preparing the Project Proposal.

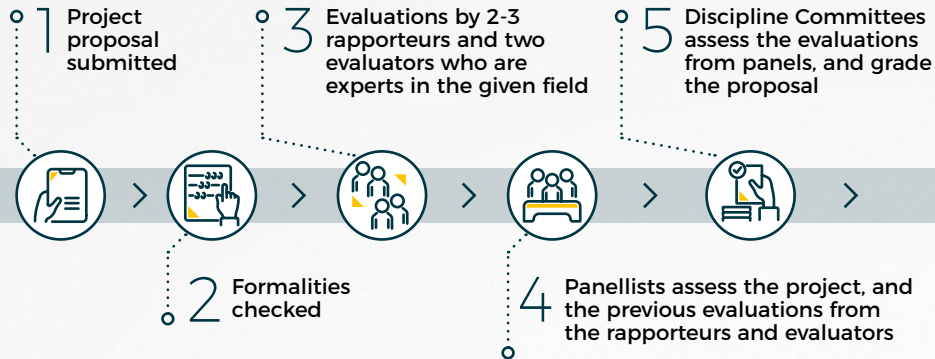


# SELECTION PROCESS

Standard Projects

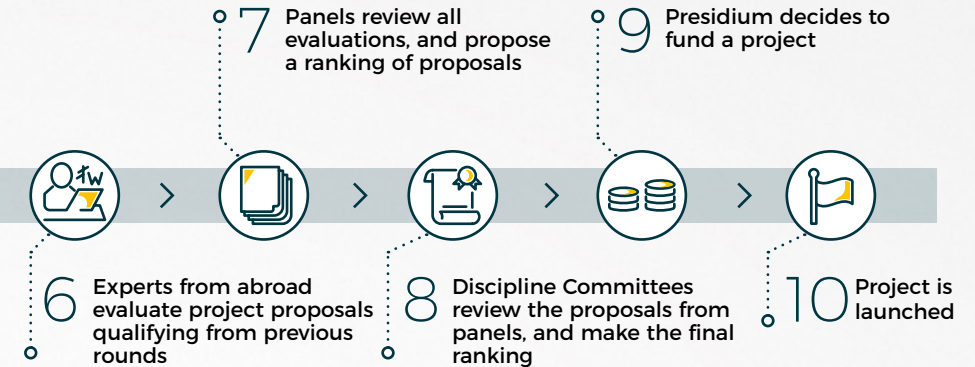
POSTDOC  
INDIVIDUAL FELLOWSHIP  
OUTGOING

POSTDOC  
INDIVIDUAL FELLOWSHIP  
INCOMING



**39** panels focusing on individual fields of science

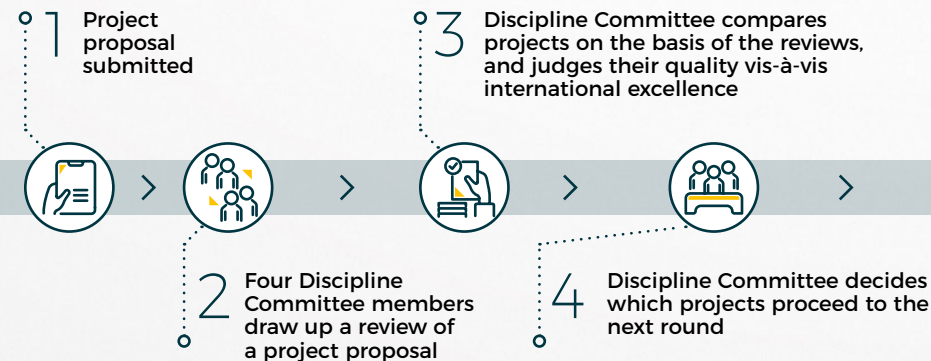
**400+** panellists recommended by scientific institutions



**tip** Even a young scientist can become an evaluator in the panel of the Czech Science Foundation.

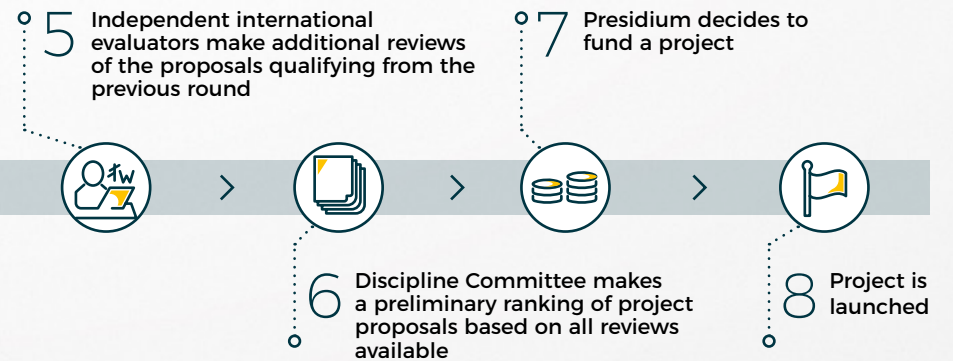
**2 500+** Project Proposals every year

## JUNIOR STAR



**8** international Discipline Committees

**112** experts in the Discipline Committees



# SCIENTISTS AS PARENTS

The Czech Science Foundation has long been fostering equal opportunities for women and men, for combining scientific work and parenthood, and for caring for loved ones.

## FLEXIBLE PROJECT SCHEDULING

(with regard to maternity/parental leave and family care)



- Postponement of the start of the project
- Possible break in the project
- Possibility of workload reduction
- Possibility of a temporary Investigator replacement

## FLEXIBLE DEADLINES AND TIME LIMITS



- Possible postponement of the evaluation of the Final Report
- Automatic extension of the maximum time span between the completion of a Ph.D. and the submission of Project Proposals due to maternity or parental leave, long-term illness or long-term care of a family member or relative

## FINANCIAL RESOURCES



- Inclusion of the living expenses of a family member within the long-term POSTDOC INDIVIDUAL FELLOWSHIPS
- Inclusion of childcare expenditures in the project costs
- Reimbursement of the sick-child social benefit even when children are placed in quarantine

## PROJECT EVALUATION



- Career breaks to care for family are taken into account when evaluating the Project Proposal and project results
- The Czech Science Foundation ensures that institutions receiving grant funds promote equal opportunities for all employees - for example, through gender equality plans



### Guide to Motherhood and Parenthood in the Tender Documents of the Czech Science Foundation

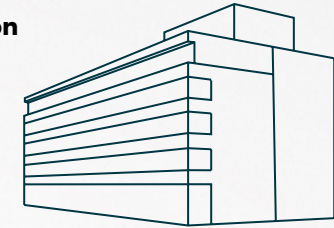
An updated document in which you find a summary of all relevant measures and regulations  
[gacr.cz/genderova-tematika-v-cinnosti-ga-cr](http://gacr.cz/genderova-tematika-v-cinnosti-ga-cr)

# CONTACTS



## WHERE ARE WE?

**Czech Science Foundation**  
**Grantová agentura**  
**České republiky**  
Evropská 2589/33b  
Praha 6 160 00



## WHERE DO YOU FIND THE LATEST INFORMATION?

[www.GACR.cz](http://www.GACR.cz)



[facebook.com/GrantovaAgenturaCR](https://facebook.com/GrantovaAgenturaCR)



## NEED ADVICE?

Mon-Thu 9:00 a.m. – 4:00 p.m., Fri 9:00 a.m. – 3:00 p.m.

+420 227 088 841

+420 227 088 861

[info@gacr.cz](mailto:info@gacr.cz)

# CZECH SCIENCE FOUNDATION UNDER THE LENS

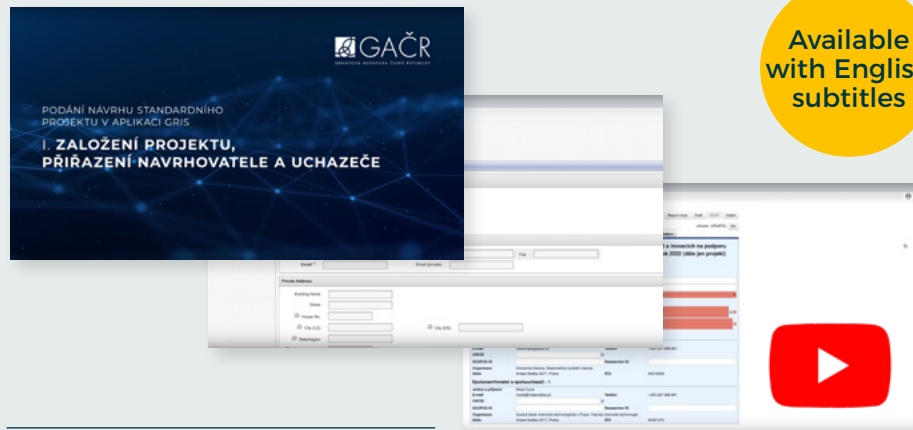
All the essentials of the Czech Science Foundation,  
clear and concise, on twenty pages



[gacr.cz/en/publications](https://gacr.cz/en/publications)

## GRIS video tutorials

Step-by-step guide to submitting a proposal for a Standard Project



[gacr.cz/en/videotutorial](https://gacr.cz/en/videotutorial)



[www.GACR.cz](http://www.GACR.cz)