

# STUDY THEOLOGY IN PRAGUE

at the Protestant Theological Faculty of Charles University



PROTESTANT  
THEOLOGICAL  
FACULTY  
Charles University

# Prague

Also known as the Mother of all Cities and the City of a Hundred Spires, Prague is located right in the heart of Europe. The city's historical center has been on the UNESCO World Heritage List since 1992. Prague is an important center of education and scientific research, while also offering many opportunities for entertainment and free time activities. The city is full of unique buildings and hidden gems – there is always something new to discover. Your Czech classmates will surely give you great tips about what to see and where to spend your free time between and after classes. Prague is also much more affordable than many other European capitals. Thanks to the city's great location, dense railway network, and affordable tickets, you can easily set off from Prague to explore other places in the Czech Republic and Europe!



**Most faculties of Charles University are located in Prague. The University's buildings in the city center are full of history, but, at the same time, they offer modern facilities for studying.**



# Charles University



Is the oldest university in Central Europe, the biggest university in the Czech Republic and the best-rated Czech university across the international rankings.



Yet it is also renowned as a modern, dynamic, cosmopolitan, and prestigious institution of higher education. Charles University ranks amongst the top 2 % of universities worldwide. The whole university comprises 17 relatively independent and self-governing faculties that offer a broad range of study programs and courses in various fields in both Czech and English. Therefore, students can attend classes not only at their home faculty but at any department that meets their interests. Our students have the option to live at the University's dormitories and dine affordably at our cafeterias. We invite all students to join us on their way to Bachelor's, Master's, and Doctoral degrees awarded by CU!



# The Bohemian Reformation

Prague is a city of historical milestones and significant events that have shaped both Czech and European history and society.

Several important events in European history took place in Prague, such as the Bohemian Reformation. Its leading representative, Jan Hus — a theologian and philosopher turned Church reformer — inspired the Hussite religious movement, which was a key precursor to Protestantism. In 1415, he was burned at the stake for the charge of heresy against the doctrines of the Catholic Church. His teachings strongly influenced the further religious, social, and political development in the Czech lands and led to the constitution of a church independent of Roman Catholic authority. From the Hussite movement also arose the Unity of Brethren, one of whose bishops was John Amos Comenius, known for his prominent theological teachings and, more importantly, as the father of modern education. The Moravian Church carried on the legacy of this church, famous for its missionary work, thanks to which it grew considerably and became a denomination of global significance. It is no wonder that Prague is the ideal place to study these events and historical figures.





# Protestant Theological Faculty

The Protestant Theological Faculty was founded in 1919 as an independent institute of higher education. It was incorporated into CU in 1990.



We are open to all those who are interested in attending, regardless of their religious or church background

We offer an stimulating academic environment, internationally accepted degrees, highest quality standards, learning community and academic excellence

We focus on developing the protestant tradition in the context of the other theological and religious traditions

Our library contains the most extensive collection of theological literature in the Czech Republic

We maintain warm partnerships with major European universities and offer a wide range of Erasmus and study abroad opportunities

We offer study programs in Protestant Theology at the Bachelor's and Master's level

We also offer two additional study programmes in pastoral and social work and an ecumenical orientation in the Christian traditions taught only in Czech

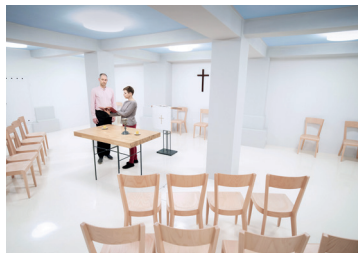


# Protestant Theology



**BA/MA**

The Protestant Theology program at our faculty offers an inspirational education in theology and related fields. The three-year Bachelor's programs and two-year Master's programs provide a curriculum that covers a wide range of topics, including, including Christian traditions, world religions, philosophical thought, ethics, ecumenical issues, Biblical studies, and more. The Bachelor's program requires a secondary education certificate and admission through an interview, while the Master's program requires a Bachelor's degree in theology and exams in Greek, Hebrew, and Latin. Students have the advantage of studying in small groups, utilizing a fully equipped research library and participating in exchange programs with top universities.



Both programs have low tuition fees of 25,000 CZK (ca 1060 EUR) per year, are provided fully in English, and offer accommodation and possibilities of benefit scholarships.

# Doctoral Studies in English

Postgraduate doctoral studies at the Protestant Theological Faculty are offered in one of the following four fields:



Philosophy of Religion



Biblical Theology

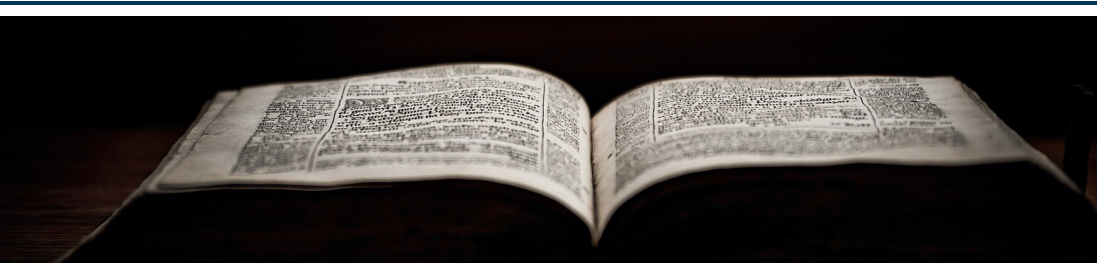


Practical and Ecumenical  
Theology and Theological Ethics



Historical and  
Systematic Theology

We offer doctoral programs in both English and Czech, with a standard length of study of four years. You can study under the supervision of experienced teachers who are actively involved in international research. The tuition for our international PhD is only 500 EUR per academic year. The study is offered in full-time and part-time form, with full-time students eligible to receive a scholarship. The faculty provides a fully equipped research library and offers opportunities for students to apply for research grants in doctoral studies. We provide an engaging research environment with various possibilities of exchange programs with top universities. The program is open to those who have graduated with a master's degree in Theology (or a related discipline) and have proved their academic abilities.



# Join us on Erasmus

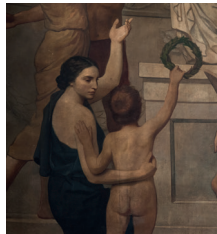
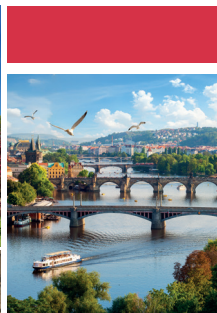


We offer high-quality education in theology, social work, and Christian traditions with experienced professors. Students can benefit from a learning community while utilizing a fully equipped research library.

We arrange an orientation program for Erasmus students, including an introduction to the Czech language and visits to places of interest, as well as information about your studies.



Students have a discount on public transport in the Czech Republic, so you can explore Prague or visit other Czech towns freely! Getting to other Central European cities such as Vienna, Krakow, Budapest, or Berlin is also easy.







With faculty's unique integration into the heart of the city, student life goes beyond the boundaries of its lecture rooms. Thank to this setting, you have ample opportunities for cultural engagement, social activities, and personal growth.

We do not forget your spiritual needs. Students can lean on the work of the Student Chaplain or visit our chapel, which is conveniently located in the faculty building. Regular services in the Student Chapel take place every Wednesday at 11:45 during the semester.



# Our Students References



Anne, Germany

„I love thinking back about my Erasmus in Prague. It was such a blessing and joy. An experience I very much enjoy sharing about and I can highly RECOMMEND. I had never been to Prague before I came there for my Erasmus studies. Not knowing what to expect I fell in love with the beauty of the city, the culture, the art, the nature, the architecture and the history behind it all.“



Daniel,  
Oklahoma, USA

„My first year at the faculty has been one of the best and most formative years of my life. Classes are small and allow you to ask any question you have to a true professional. All of my professors are passionate about their work and eager to help. With many incredibly interesting guest lectures, the best library ever, and the annual archaeological trip to Israel, there are plenty of opportunities for learning and the courses offered are all so interesting. The faculty really does have a familial atmosphere, and you can tell the entire faculty is really invested in you. The journey to class is one of my favorite parts of the day, since the faculty is located right in the heart of the beautiful city. Prague itself is an amazing place to be, the music scene, student life, and history have influenced me and many of my friends to move back here at some point.“



Jana, Germany

„I literally loved studying in Prague! The Protestant Theology Faculty is a very special place, with its familiar atmosphere and friendly open-minded people. The international office put so much time and energy into us internationals to make us feel welcome. During the semester they were a great help, organised trips for us and took us to cool places.“

# Accommodation

Charles University does not have a campus, but it is simple to travel around our faculties using public transport. Our students have the option of living at Charles University Dormitories, which offer conveniently located accommodation for reasonable prices.. We strongly recommend first-year students to live in our dormitories. Prices vary depending on the room type and location. Most rooms are twin rooms, shared with one other student.

Students who prefer not to live in our dormitories are welcome to find private accommodation or share flats with other students: there are plenty of options in all our university cities. Rents are paid monthly and depend on the size, location and the type of the property. Compared to other big European cities, accommodation in the Czech Republic is affordable. Students who prefer quiet neighbourhoods and even more affordable prices may consider living outside the city centre.



**4 €**

lunch meal at a university canteen



**2 €**

capuccino at a university canteen



**250 €**

monthly dorm fee



**6 €**

monthly student pass for public transport



**25 €**

monthly unlimited student mobile phone contract



**from 10 €**

new book in a bookshop



**6-10 €**

student cinema ticket



**from 6 €**

student ticket to the National Theatre with English subtitles



**10 €**

student ticket to Prague Zoo

# CONTACT US

Protestant Theological Faculty of Charles University



 [studytheology.eu](http://studytheology.eu)

 [international@etf.cuni.cz](mailto:international@etf.cuni.cz)

  [@etf\\_unikarlova](https://www.instagram.com/etf_unikarlova)

 [facebook.com/etfunikarlova](https://www.facebook.com/etfunikarlova)



PROTESTANT  
THEOLOGICAL  
FACULTY  
Charles University